



Mrs. Barbara Ann Bradley

October 1, 1946 - June 27, 2025

Barbara Ann Bradley, 78, of Plant City, Florida, born in Bartow on October 1, 1946, entered into eternal rest on June 27, 2025. She was a member of Lone Oak Baptist Church, and enjoyed traveling, and dining. She is survived by husband, Ralph E. Bradley; sisters, Margaret Pearson (Melvin) of Mulberry, Janet Tindel of Plant City, and Diana King (Robert) of Maynardville, Tennessee; and many nephews, nieces, family, and friends. She was preceded in death by sister, Ernestine Grimes. A funeral service will be held Friday, July 11 at 11:00 A.M. at Hopewell Funeral Home, 6005 South County Road 39, Plant City, where the family will receive friends beginning at 10:00 A.M. Graveside committal to follow at Hopewell Memorial Gardens. Expressions of condolence at HopewellFuneral.com.

Cemetery Details

Hopewell Memorial Gardens

6005 County Road 39 South
Plant City, FL 33567
(813) 737-3128
office@hopewellfuneral.com
<https://www.hopewellfuneral.com>

Previous Events

Visitation

JUL 11. 10:00 AM - 11:00 AM (ET)

Hopewell Funeral Home
6005 County Road 39 South
Plant City, FL 33567
(813) 737-3128
office@hopewellfuneral.com
<http://www.hopewellfuneral.com>

Funeral Service

JUL 11. 11:00 AM - 12:00 PM (ET)

Hopewell Funeral Home
6005 County Road 39 South
Plant City, FL 33567
(813) 737-3128
office@hopewellfuneral.com
<http://www.hopewellfuneral.com>

Tribute Wall



“ Hopewell Funeral Home created a Tribute Video in memory of Mrs. Barbara Ann Bradley



Hopewell Funeral Home - July 12, 2025 at 09:40 AM



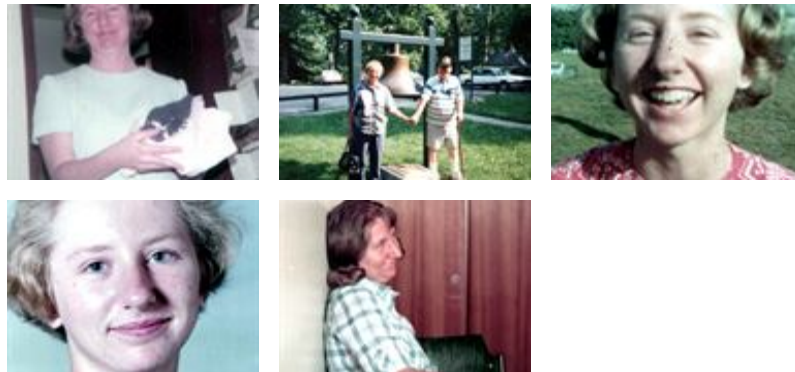
“ So sorry for the loss of your sister and a fellow Pilot. Our thoughts and prayers are with the family.



Sandra Shirley Waldron - July 08, 2025 at 03:58 PM



“ 27 files added to the album LifeTributes



Hopewell Funeral Home - July 08, 2025 at 01:24 PM

CM

“ *Very sorry for your loss. We all went to school together.*

Carol Swilley Mathis - July 07, 2025 at 05:08 PM